



*Masterworks*  
F R A M E S

2023 TEMPLE CATALOG



1518 West 400 South • Orem, UT 84058 • Cell 801-380-0507

[michael@masterworksframes.com](mailto:michael@masterworksframes.com)

# Masterworks Frames Products and Services

*The Church of Jesus Christ of Latter-day Saints has contracted with  
Masterworks Frames to produce Mirror Frames for Sealing and Celestial rooms.*

## Table of Contents

About Us.....	3
Custom Ordering Process .....	4
Finish Samples .....	5
Sealing Room Mirrors .....	6
Adjustable Mirror Hanging Mechanism .....	7
Bride's Room Mirrors.....	8
Arch Frames, Bent Arches and Arch Inserts .....	20
Closed Corner Artwork Frames.....	28
List of Temples .....	96





The story of Masterworks Frames began with the desire to provide artists genuine gold leaf frames at a reasonable price. Michael and Heather Graham started their business in 2007. Since then Masterworks has grown into an 8,000 square foot shop with 15 highly skilled artists, artisans, woodcarvers, gilders and office personnel. Masterworks currently frame for over 400 artists, designers, and galleries across the country, averaging over 3,000 frames per year. Masterworks' specialty—and joy—is finding the perfect harmony of architecture and artwork then incorporating them into a frame.

Michael has loved working with wood since he was a boy and has over 30 years of professional experience. Prior to starting Masterworks Frames he spent 12 years building luxury custom furniture.

Michael considers providing frames for the House of the Lord a true privilege. Every Masterworks employee involved in the production process of a Temple frame understands that there is no higher quality to be provided than that of a Temple frame. Masterworks Frames is honored to be able to use their talents to beautify the House of the Lord and are grateful for every Temple frame they are privileged to produce.

# Custom Frame Ordering Process



1. Reach out to us directly or use Printing Services for a quote.



2. Set up a design session with us at either our shop (Zoom option available) or at Printing Services.



3. Based on your input we will create scaled drawings and ornamentation for your approval. We will then deliver a scaled corner sample to you for your final approval.



4. We are ready to start building your frame. If desired, we will provide you with regular updates and images throughout production.

## Themed Sculpture / Compositional Ornaments

We can match or modify any drawing, or we can design unique ornaments to fit a specific theme.

## Production Time

If you are using a corner sample on the wall at Printing Services or in this catalog please allow 2 to 3 weeks of production time depending on quantity of frames.

Custom Mirror frames need 8 to 12 weeks of production time depending on frame complexity.

## Shipping and Domestic Installations

Typically, Printing Services handles all shipping and logistics to save costs. Our mirrors and frames are engineered to be installed by local Temple Facility Management (“TFM”).

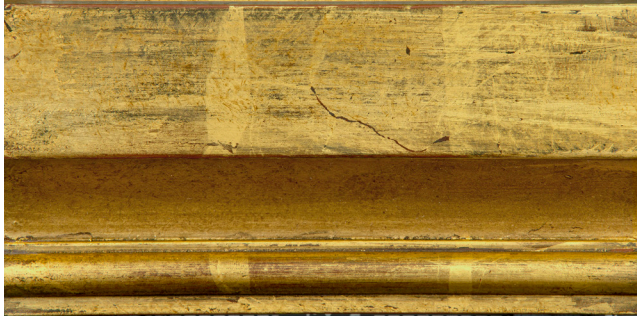
## Discounts and Pricing

Any order of 10 or more frames for artwork will receive a 15% discount.

Any order where we build all of the Custom Mirrors for a single Temple will receive a 15% discount.



# Finish Samples



22k full - Rich antique (red and black clay)



22k full - Rich antique (yellow and orange clay)



22k full - Regular antique (yellow and orange clay)



22k full - Very little breakdown, Light antique (yellow and orange clay)



18k full - Regular antique (yellow and orange clay)



16k full - Regular antique (Light yellow and orange clay)



Metal leaf full - Regular antique (yellow and orange clay)

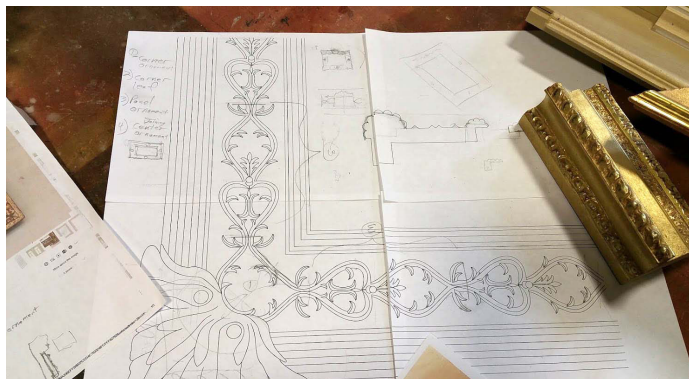


# Sealing Room Mirrors

*The Church of Jesus Christ of Latter-day Saints  
has contracted with Masterworks Frames to produce Mirror Frames  
for Sealing and Celestial rooms.*

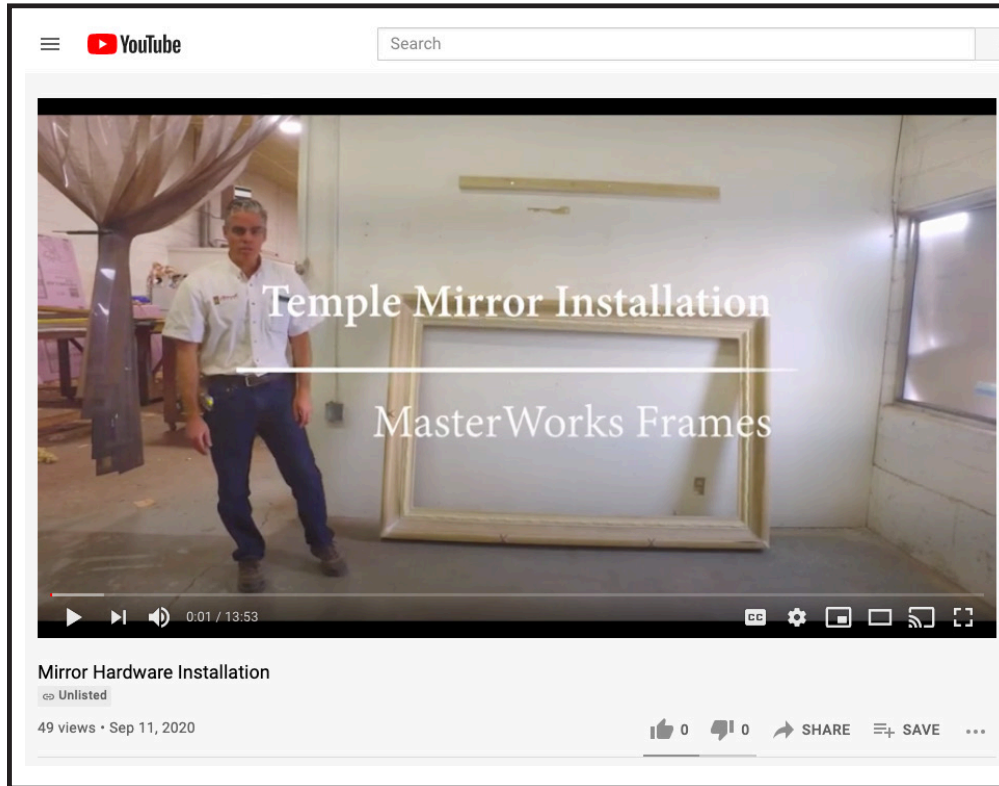
Below are images of Masterworks mirror frames in various stages of progress from the Santiago, Chile and Boston, Massachusetts Temples.

Our artists create all ornament design and sculpture in-house. We also work with master carver Craig Hone.



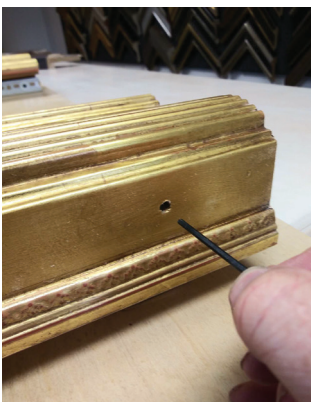
# Easy-to-Use Mirror Hanging Mechanism

Masterworks has designed a hardware mechanism system which is so simple it can be installed and adjusted by anyone on-site.



YouTube video tutorial provided to the TFM's to facilitate mirror installation and adjustments

<https://www.youtube.com/watch?v=KcDFRlOKA2s>



Mirror adjustments made in the bottom of the frame



Uniquely designed gear box for ultra fine mirror adjustment



Steel reinforced French cleat



# Bride's Room Mirrors



# Bride's Room Mirrors



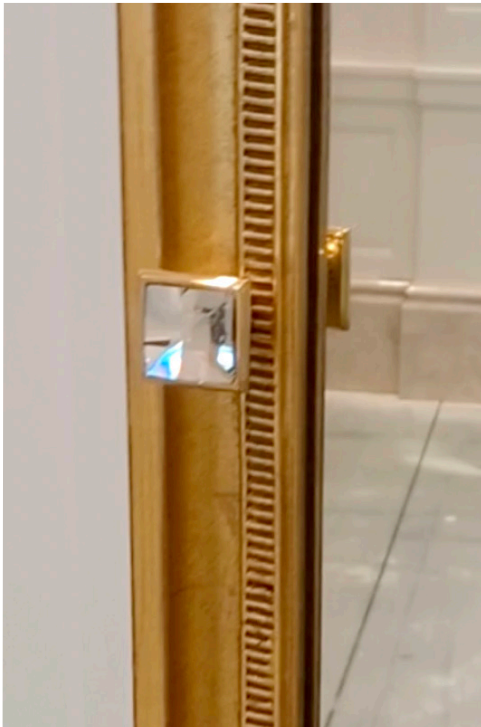


# Bride's Room Mirrors

## Orem, UT







# Bride's Room Mirrors

## Richmond, VA







Sealing Room Mirrors  
Richmond, VA







# Bridal Room Mirrors

## Peru



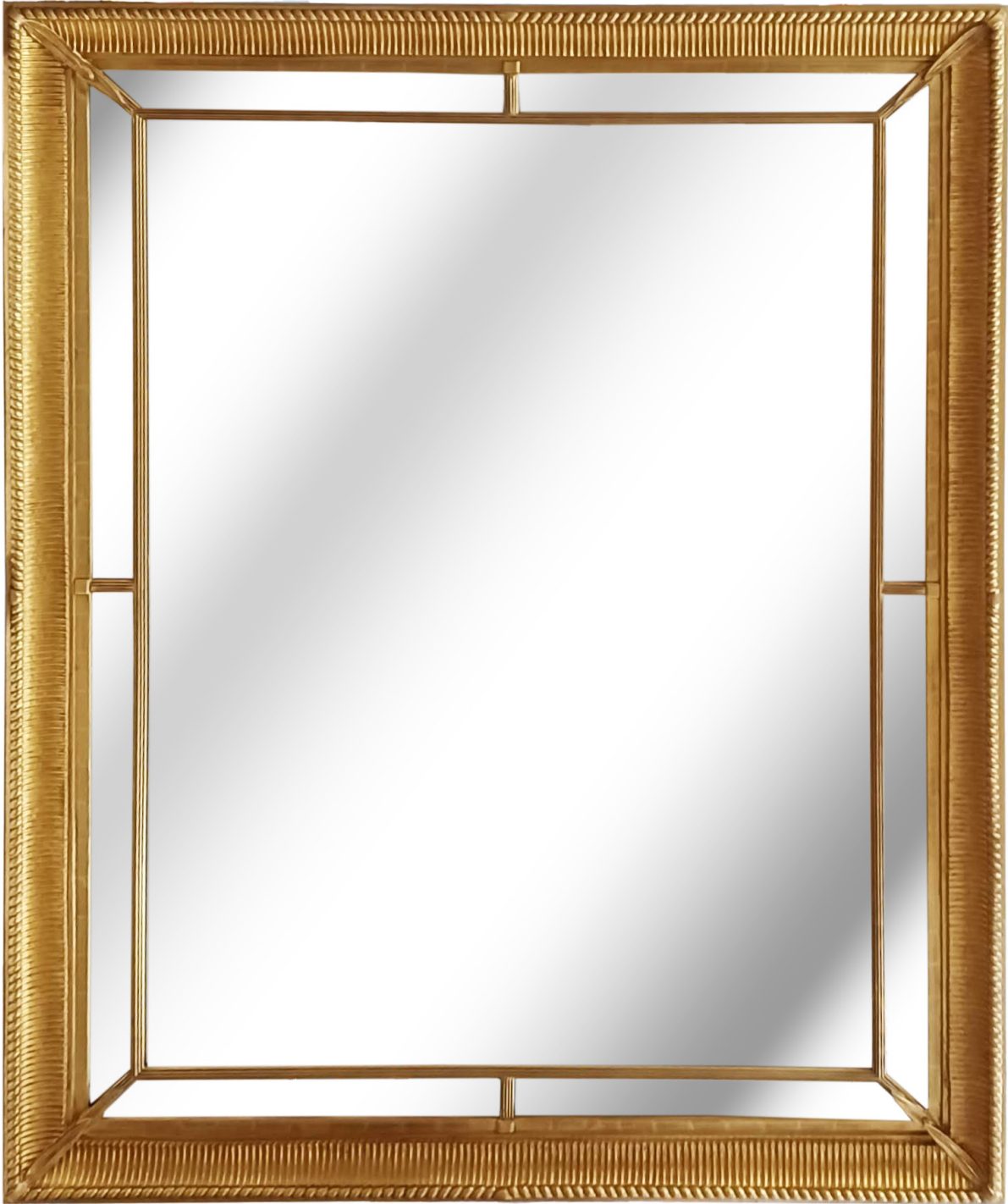






# Sealing Room Mirrors

## Peru





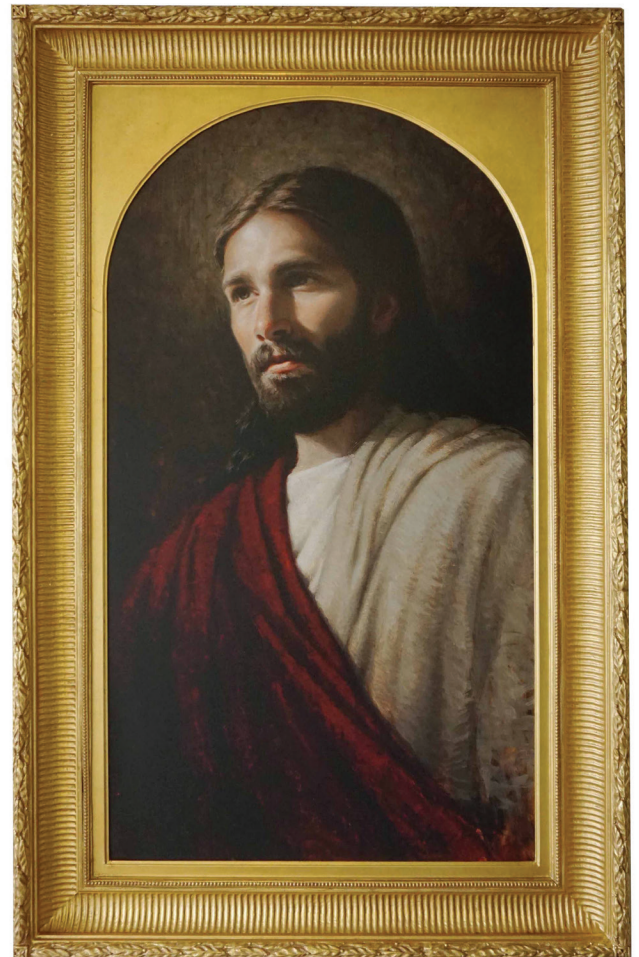
# Arch Frames

Bent Arches



Washington D.C. Temple

Arch Inserts



Art by Dan Wilson



**MWF #122**

**Bent Arch**



Washington D.C. Temple

**MWF #306**  
**Bent Arch**



**Kyiv, Ukraine Temple  
and Hague, Netherlands Temple**



**MWF #304**

**Whistler with Arch Liner 41"x 86"**



Painting by Carl Bloch



**MWF #222 Bent Arch Picture**  
**Carved Reverse with Arch Liner 46"x 58"**



Painting by Carl Bloch



## MWF #501

Arched Tabernacle Frame with Raised Sgraffito



Painting by Dan Wilson

**MWF #310**

**Laurel Fluted Scoop w/ Arch Liner 27"x 49"**



Painting by Dan Wilson



**MWF #503**

**Ornate Classical Tabernacle with Arch Liner 27" x 44"**

**Idaho Falls, Idaho Temple**



Painting by Joseph Brickey — Carl Bloch Master Copy

# Closed Cornered Frames

Masterworks has over 75 corners specifically designed to be used in the Temples for The Church of Jesus Christ of Latter-day Saints.

Most corners are available at Printing Services. This catalog offers all available corners.

We can produce any frame you have in mind—if you can envision it, we can create it.

Masterworks has provided over 600 frames in over 100 Temples over the last seven years.

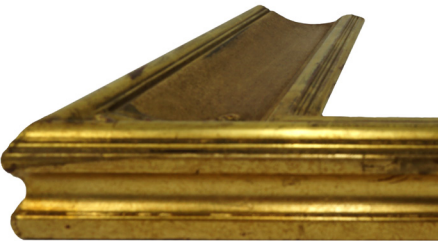
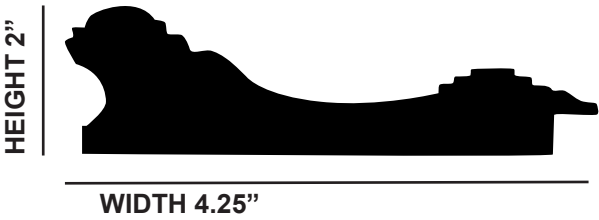




# MWF #114

Preston

Full 22k Temple Finish



# MWF #115

Alta

Full 22k Temple Finish

HEIGHT 2.75"



WIDTH 5"





# MWF #116

Cassette

Full 22k Temple Finish

HEIGHT 2.25"



WIDTH 3.75"

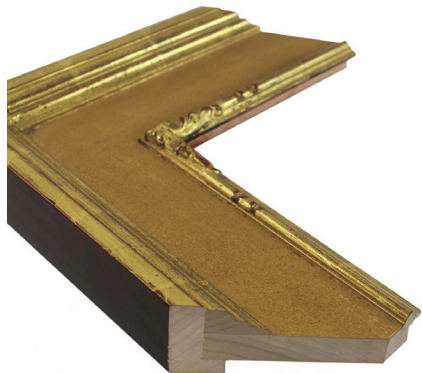


**MWF #118**  
**Monterey with Bead**  
**Full 22k Temple Finish**

HEIGHT 2.75"



WIDTH 4.5"





**MWF #119**  
**Scoop with Compo**  
**Full 14k Temple Finish**



**MWF #120**  
**Classical Scoop**  
**Full 22k Temple Finish**



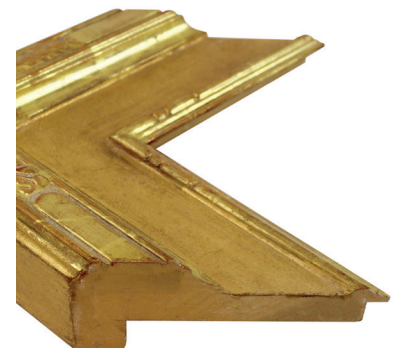
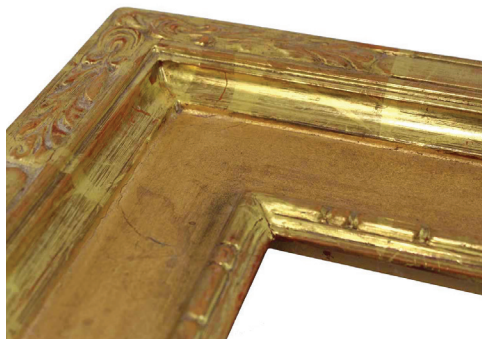


**MWF #122**  
**Arlington**  
**Full 22k Temple Finish**

HEIGHT 2.75"



WIDTH 5.25"



**Arlington with Ornate Liner**  
**Full 22k Temple Finish**

HEIGHT 2.75"



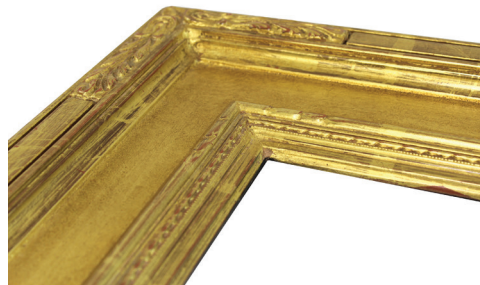
WIDTH 5.25"



**MWF #123**  
with Liner and Small Rope trim



**MWF #124**  
with Liner and Bead trim





**MWF #125**  
**Charlotte with Carve Inside**  
**Full 22k Temple Finish**

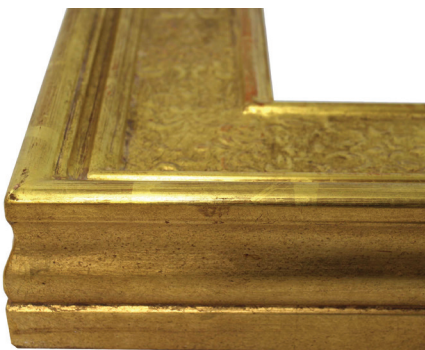
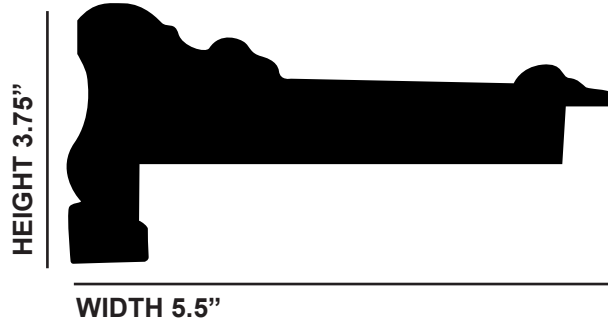
HEIGHT 2.5"



WIDTH 4.75"



**MWF #209**  
**Raised Sgraffito**  
**Full 22k Temple Finish**





# MWF #214

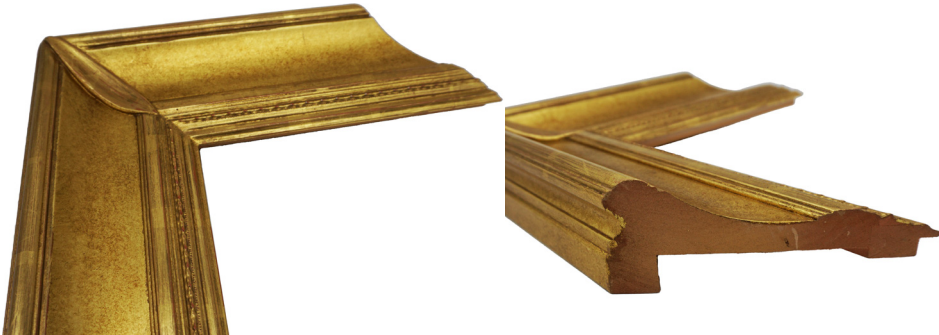
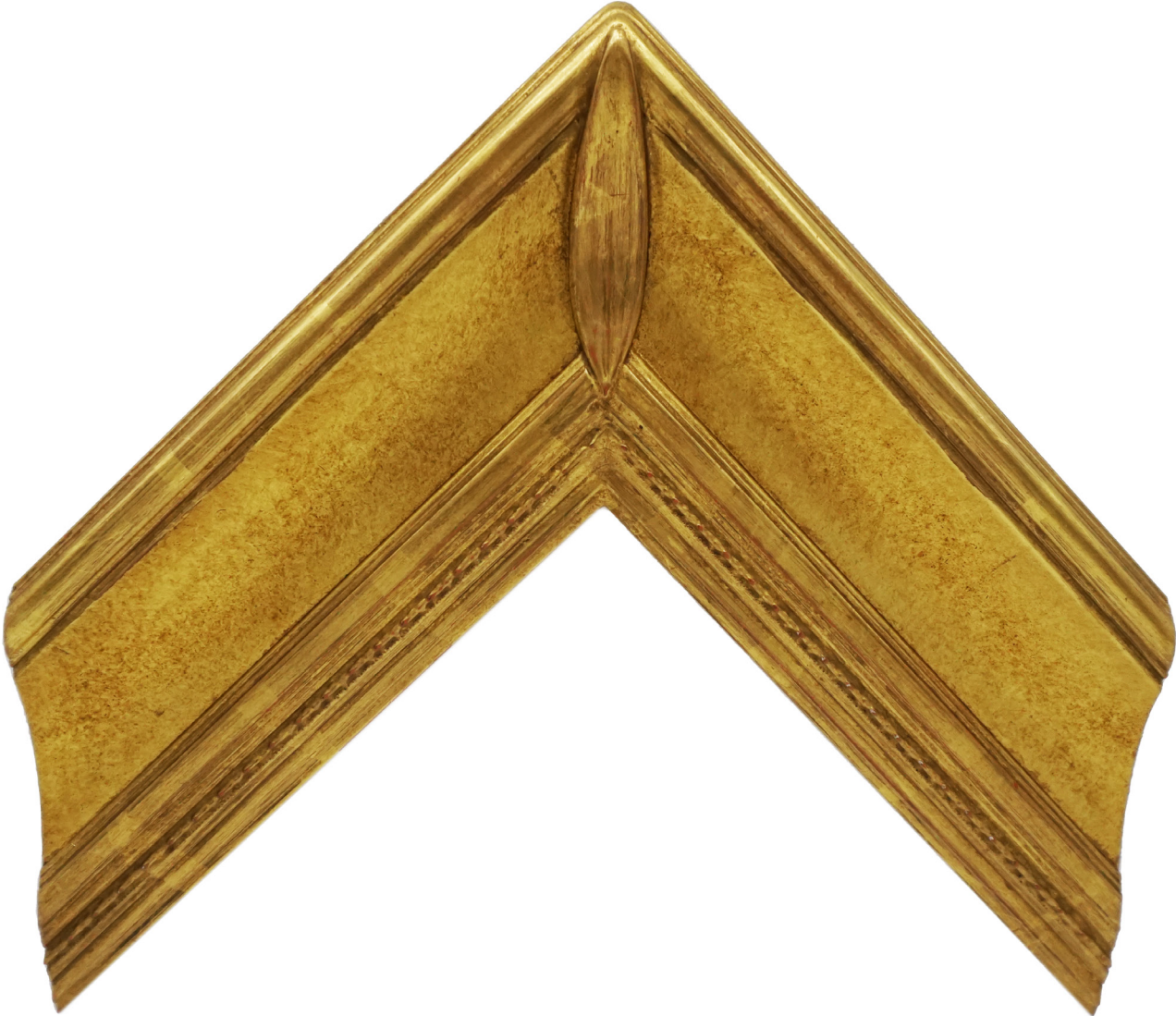
Preston with Olive Compo

Full 22k Temple Finish

HEIGHT 3.25"



WIDTH 5.5"

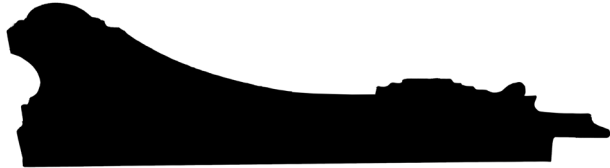


# MWF #215

Preston Contemporary

22k Temple Finish

HEIGHT 2.5"



WIDTH 5.25"



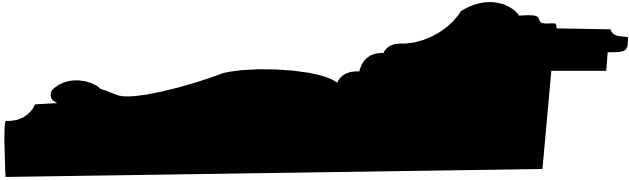


# MWF #216

Geneva

Full 22k Temple Finish

HEIGHT 2.5"



WIDTH 5.25"



# MWF #219

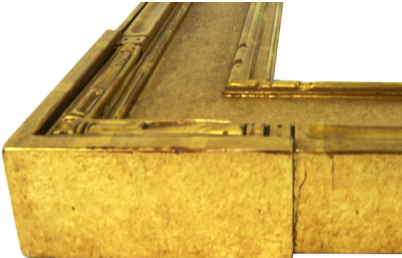
Santa Fe

Full 22k Temple Finish

HEIGHT 2.75"

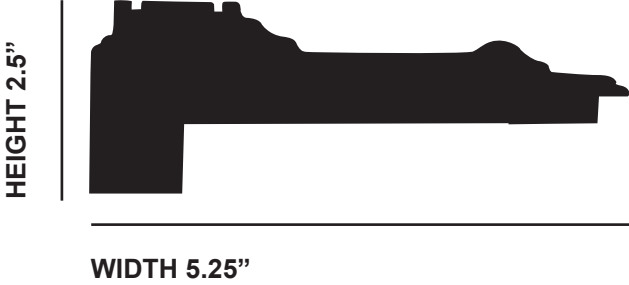


WIDTH 6"





**MWF #220**  
**Charlotte w/ Liner**  
**Full 22k Temple Finish**

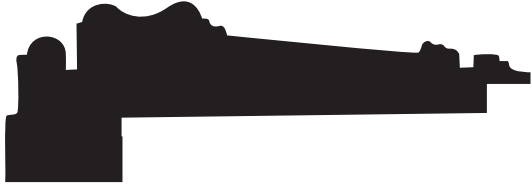


**MWF #221**

**Colonial**

**Full 22k Temple Finish**

HEIGHT 3.25"



WIDTH 5.625"





**MWF #222**  
**Carved Reverse**  
**Full 22k Temple Finish**

HEIGHT 2.75"



WIDTH 5.25"



**MWF #225**  
**Scoop Egg and Dart Heel**  
**Full 16k Temple Finish**

HEIGHT 3.75"



WIDTH 5.25"





# MWF #226

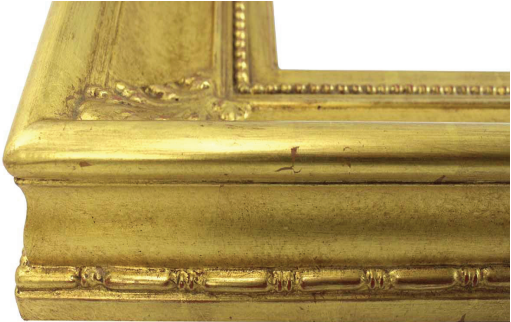
Scoop w/ Bar and Bead

Full 22k Temple Finish

HEIGHT 3.75"



WIDTH 5.75"



**MWF #227**  
**Scoop w/ Ornate Heel**  
**Full 22k Temple Finish**

HEIGHT 3.875"



WIDTH 6.25"





**MWF #230**  
**Carved Manchester**  
**Full 22k "Aged" Finish**



WIDTH 5.25"



# MWF #233

Carved Manchester w/ No Liner

Full 22k Temple Finish

HEIGHT 3"



WIDTH 4.75"





**MWF #240**  
**Drop Reverse w/ Carve**  
**Full 22k Temple Finish**

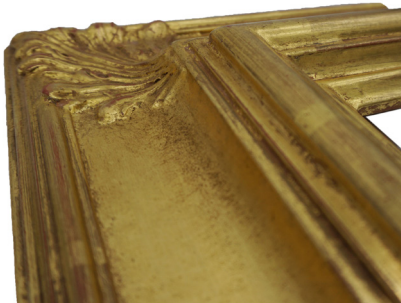


**MWF #242**  
**Drop Reverse Large Compo**  
**Full 22k Temple Finish**

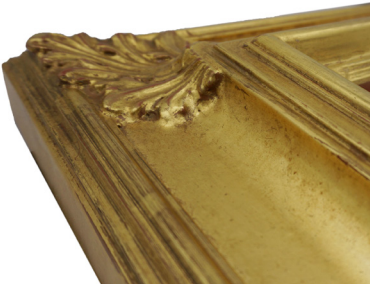
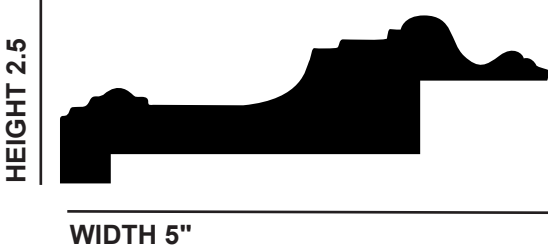




**MWF #243**  
**Drop Reverse**  
**Full 22k Temple Finish**



**MWF #244**  
**Drop Reverse**  
**Full 22k Temple Finish**





**MWF #245**  
**Winchest Olive Leaf w/ Carve**  
**Full 22k Temple Finish**

HEIGHT 1.375"

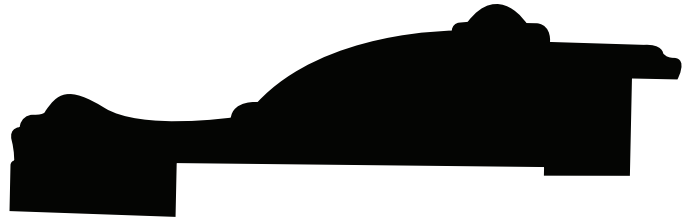


WIDTH 2.25"

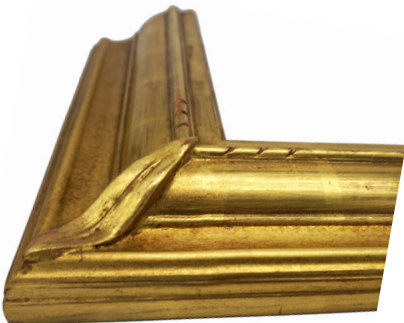


**MWF #246**  
**Winchest Olive Leaf w/ Carve**  
**Full 22k Temple Finish**

HEIGHT 1.375"



WIDTH 4.25"





**MWF #247**  
**Winchester w/ Art Nouveau Carve**  
**Full 22k Temple Finish**

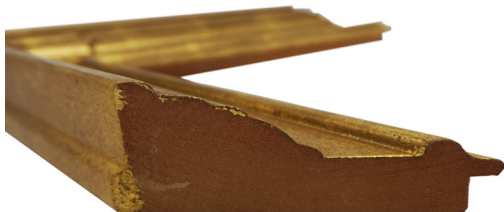
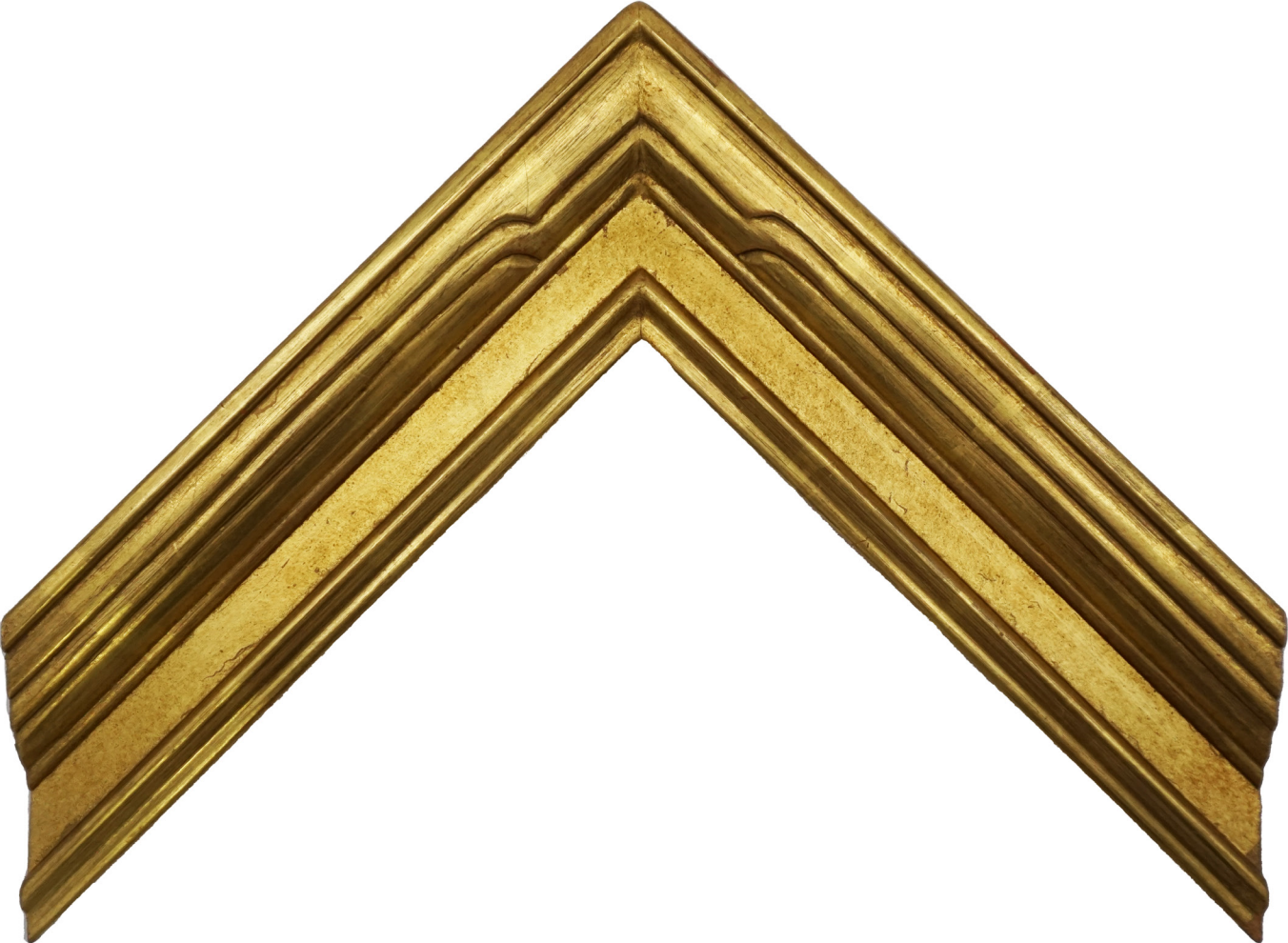
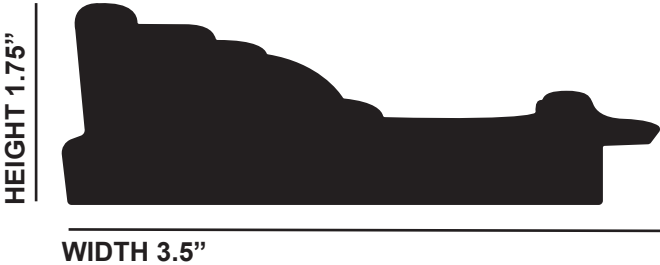
HEIGHT 1.375"



WIDTH 4.25"

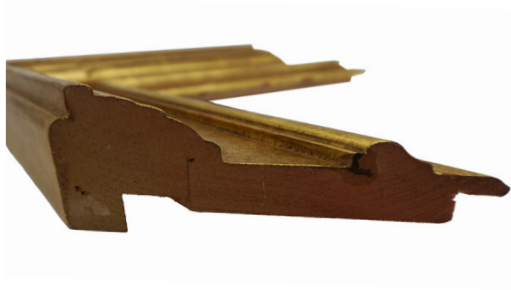
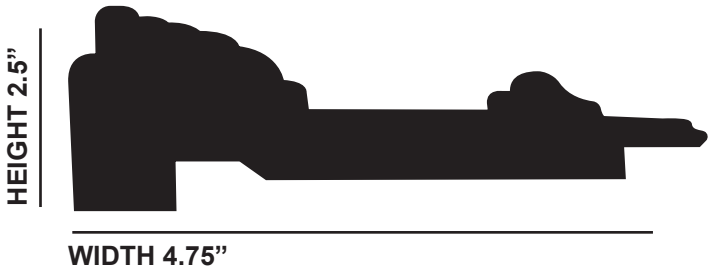


**MWF #250**  
**Belleville Simple Curve Carve**  
**Full 22k Temple Finish**

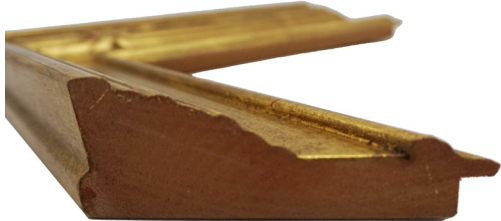




**MWF #251**  
**Belleville Simple Curve Carve**  
**Full 22k Temple Finish**



**MWF #252**  
**Belleville Marriage Knot Carve**  
**Full 22k Temple Finish**



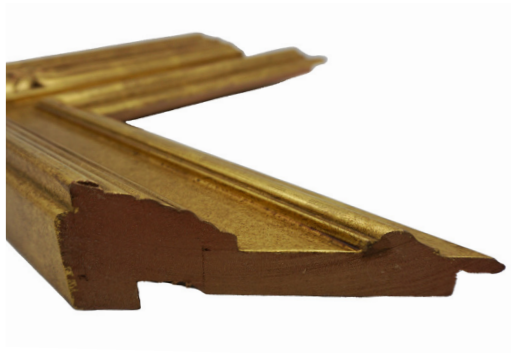


**MWF #253**  
**Belleville Marriage Knot Carve**  
**Full 22k Temple Finish**

HEIGHT 2.25"



WIDTH 4.75"

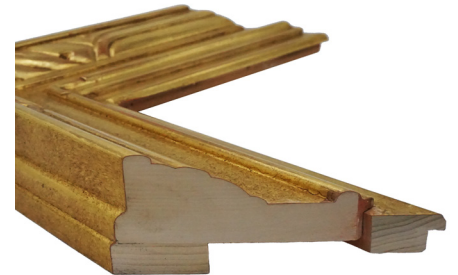


**MWF #254**  
**Belleville in Carve #4**  
**Full 22k Temple Finish**

HEIGHT 1.75"



WIDTH 4"



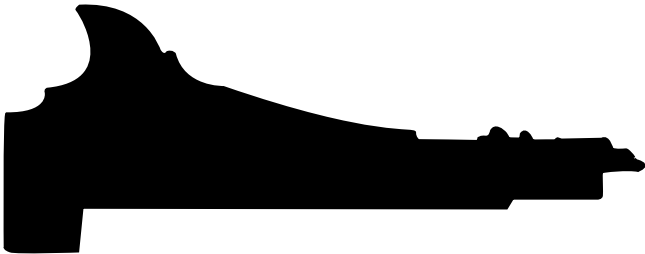


# MWF #300

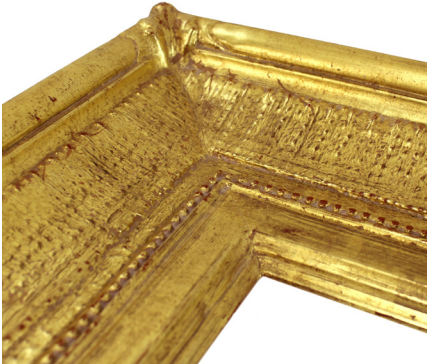
Stafford

Full 22k Temple Finish

HEIGHT 3.5"



WIDTH 6"



**MWF #301**  
**Whistler w/ Small Leaf**  
**Full 22k Temple Finish**

HEIGHT 2.125"



WIDTH 4.25"





**MWF #302**  
**Covington with Leaf**  
**Full 22k Temple Finish**

HEIGHT 1.75"



WIDTH 3"

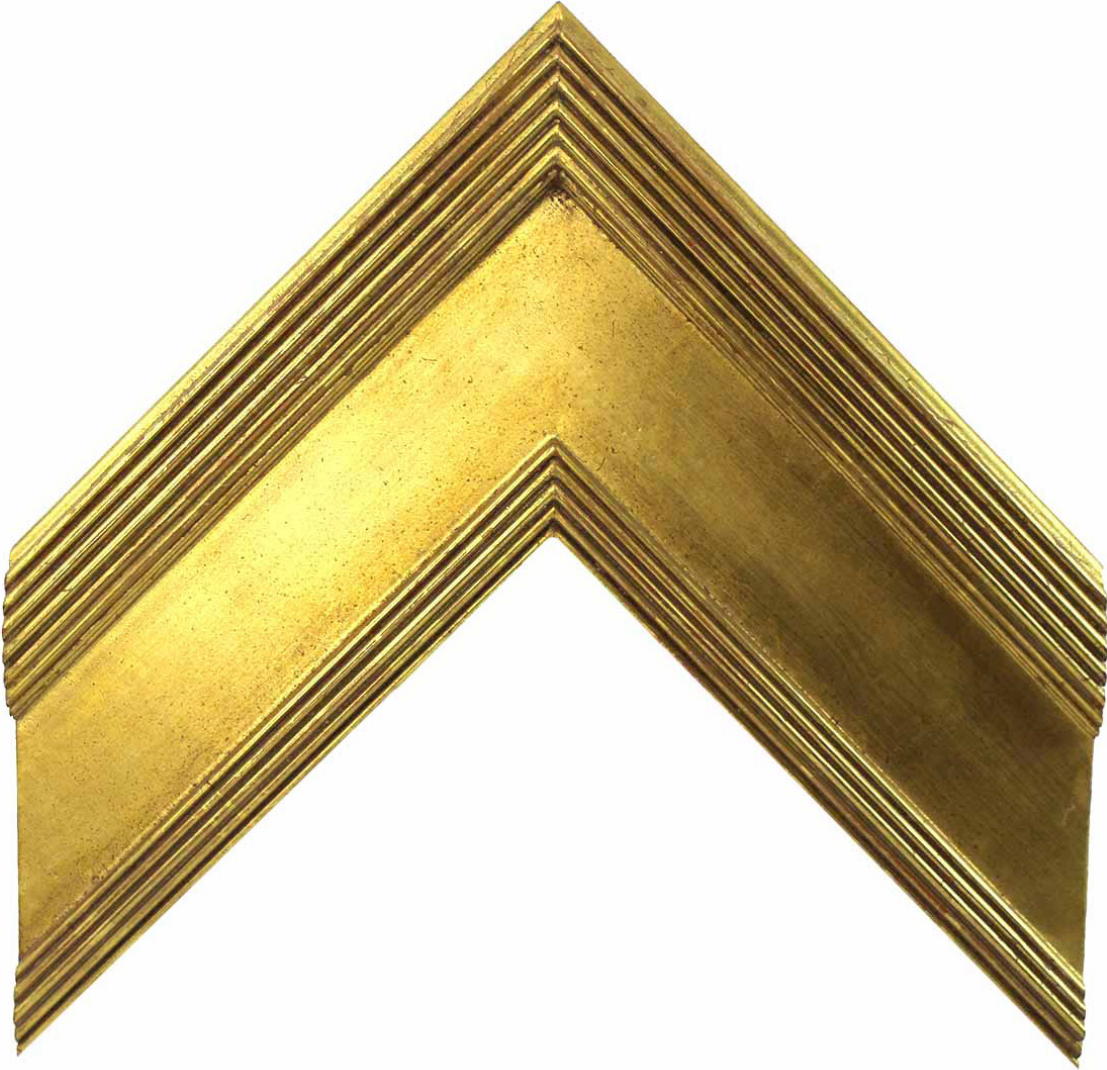


**MWF #303**  
**Plain Whistler**  
**Full 22k Temple Finish**

HEIGHT 2.125"



WIDTH 5.25"





**MWF #304**  
**Whistler with Leaf Pour**  
**Full 22k Temple Finish**

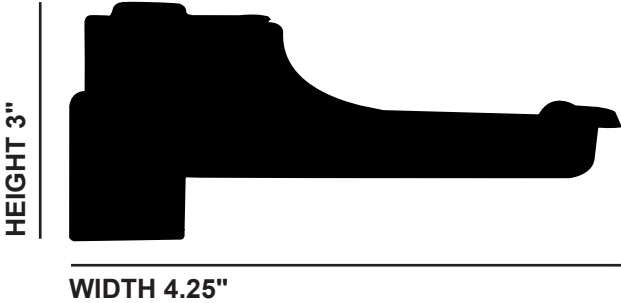
HEIGHT 2.75"



WIDTH 6"

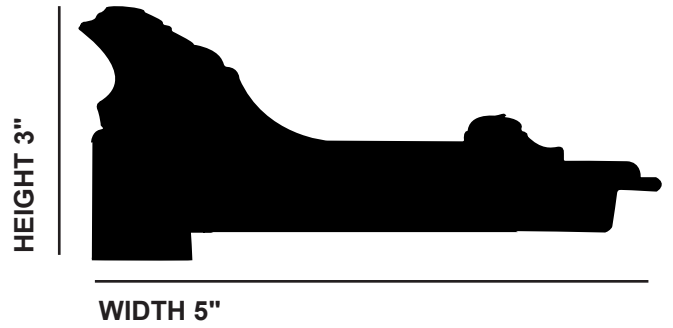


**MWF #305**  
**Drop Scoop**  
**Full 22k Temple Finish**

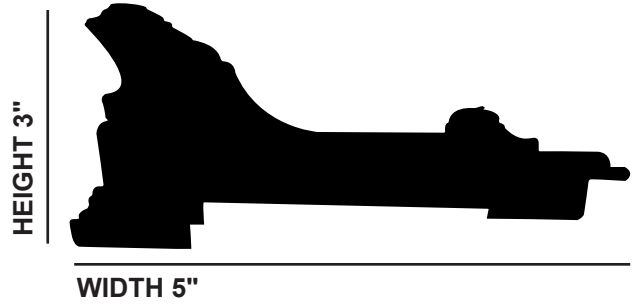




**MWF #306**  
**4" Drop Scoop**  
**Full 22k Temple Finish**

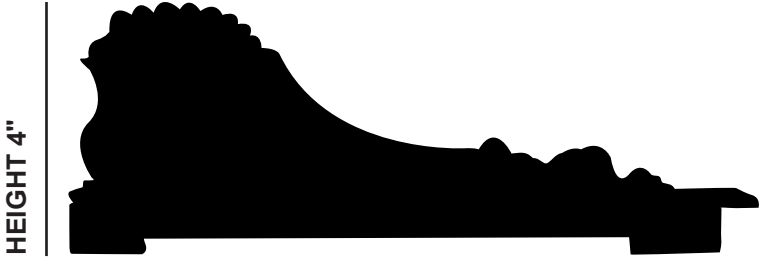


**MWF #307**  
**4" Drop w/ Ornate Heel**  
**Full 22k Temple Finish**





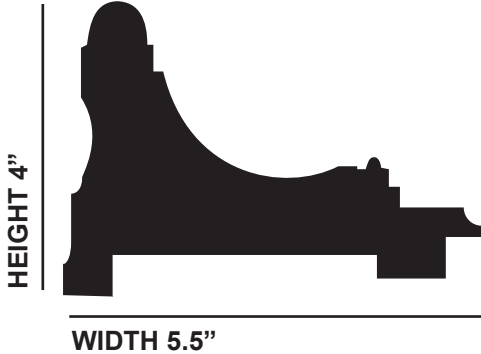
**MWF #308**  
**Pioneer Scoop**  
**Full 22k Temple Finish**



WIDTH 7.25"



**MWF #310**  
**Laurel Fluted Scoop**  
**Full 22k Temple Finish**



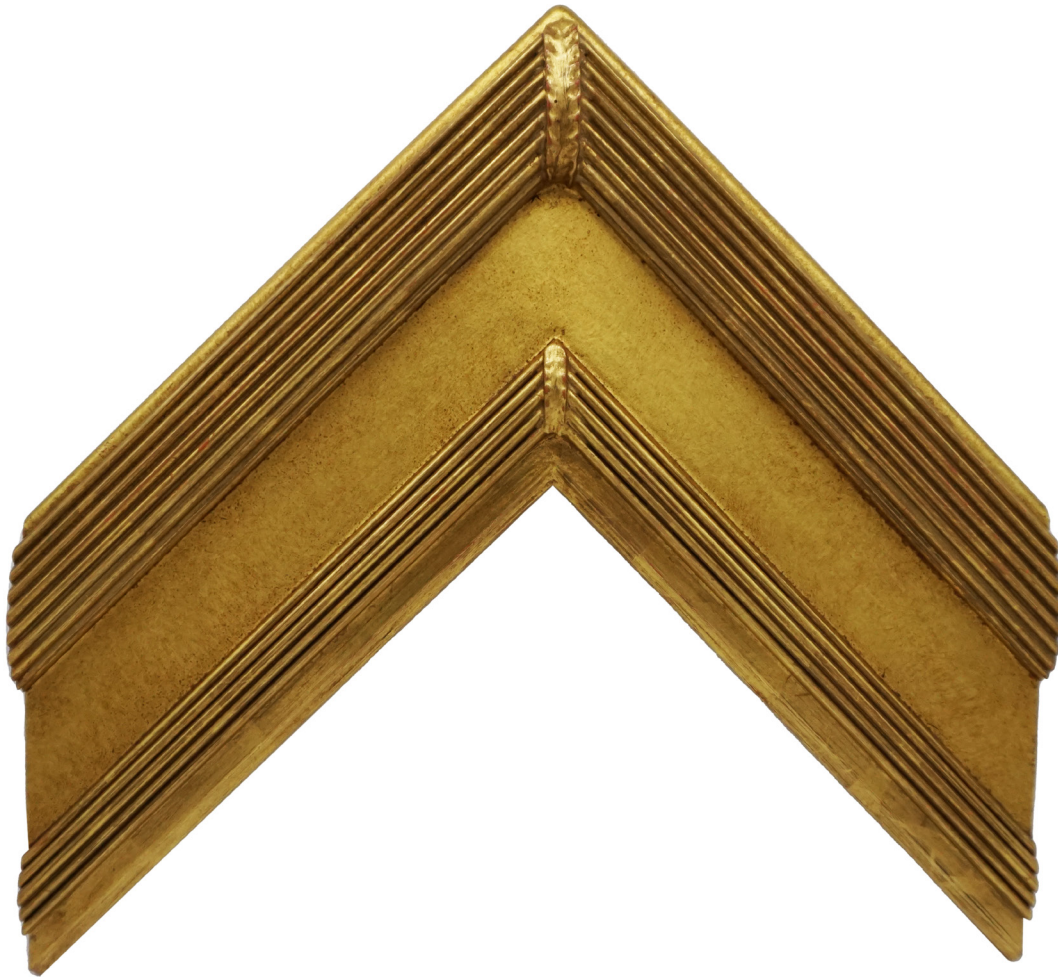


**MWF #313**  
**Whistler Double Ribbon**  
**Full 22k Temple Finish**

HEIGHT 2"



WIDTH 5.5"



# MWF #315

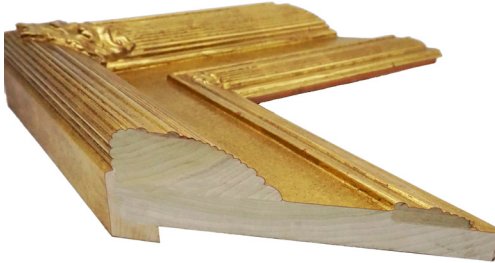
Delphi Renaissance Compo

Full 22k Temple Finish

HEIGHT 2.25"

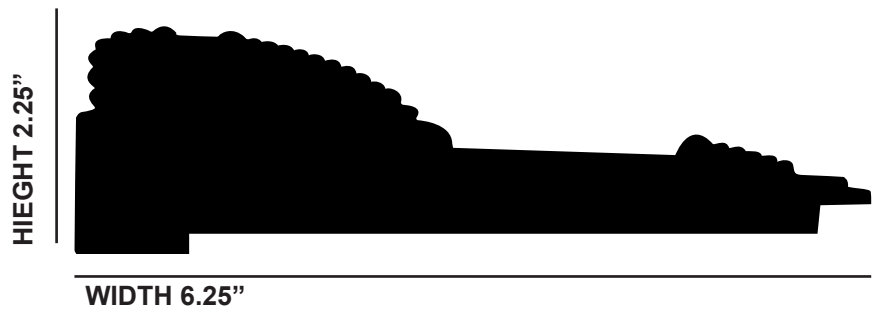


WIDTH 6.25"





**MWF #316**  
**Delphi Romanesque**  
**Full 22k Temple Finish**



**MWF #402**  
**Small Dogwood**  
**Full 22k Temple Finish**

HEIGHT 1.75"



WIDTH 3.5"





**MWF #403**  
**Large Dogwood**  
**Full 22k Temple Finish**

HEIGHT 2.25"



WIDTH 4"



# MWF #404

Complex with Steep Taper 2.5"

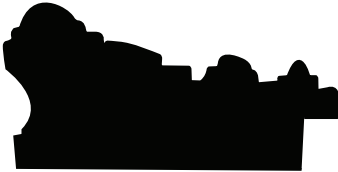
Full 22k Temple Finish





**MWF #405**  
**Shield with Square Corner**  
**Full 22k Temple Finish**

HEIGHT 1.75"



WIDTH 3.25"



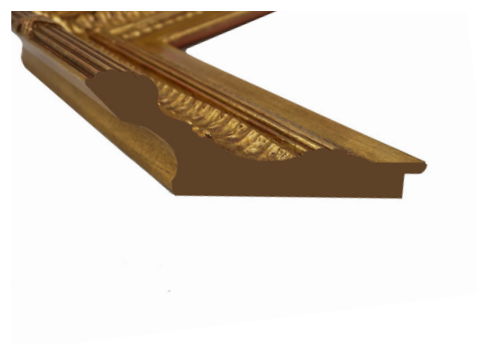
# MWF #550

Versailles with Bands  
Full 22k Temple Finish

HEIGHT 3.75"



WIDTH 5.75"





# MWF #551

Versailles Stacked Ornate Corner  
Full 22k Temple Finish

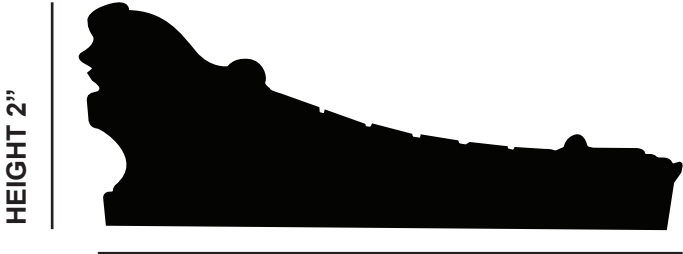
HEIGHT 3.75"



WIDTH 5.75"



**MWF #600**  
**Preston Tight Flute**  
**Full 22k Temple Finish**



WIDTH 4.25"

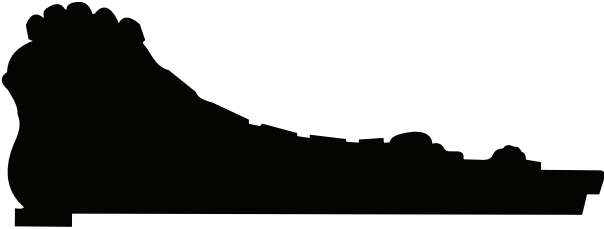




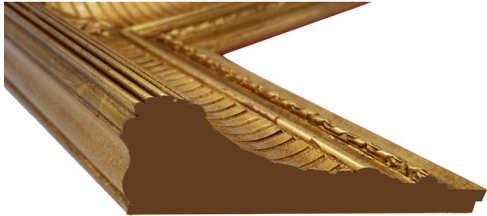
# MWF #601

Shallow Flute Ribbon Inside Bar  
Full 22k Temple Finish

HEIGHT 3.25"



WIDTH 6"

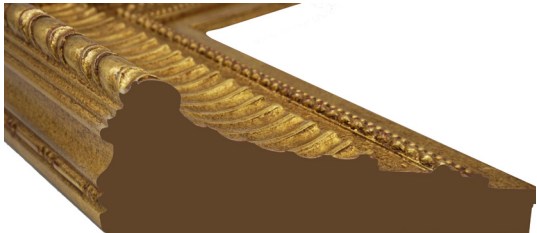


**MWF #602**  
**Peru Flute Double Bead**  
**22k Temple Finish**

HEIGHT 3.5"



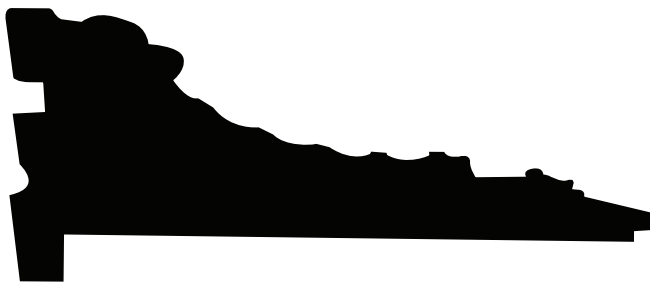
WIDTH 6.5"



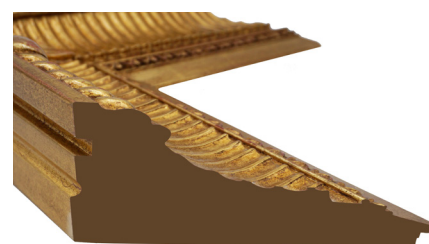


**MWF #603**  
**Peru Flute and Leaf**  
**22k Temple Finish**

HEIGHT 3.75"



WIDTH 6"



**MWF #901**  
**Contemporary Taper**  
**Full 22k Temple Finish**

HEIGHT 3.5"

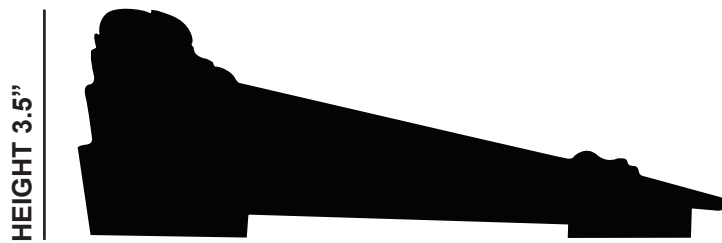


WIDTH 6.25"

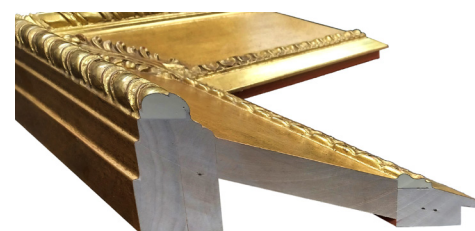




**MWF #902**  
**Contemporary Taper**  
**22k Temple Finish**



WIDTH 6.25"

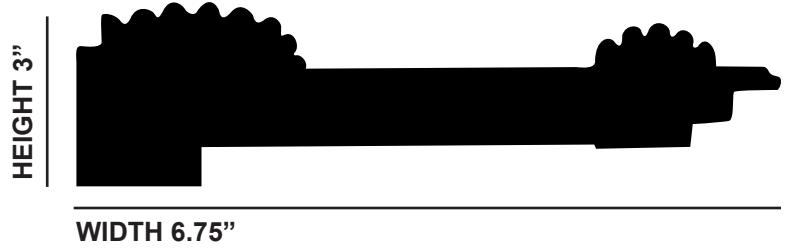


**MWF #904**  
**Palladian Star**  
**Full 22k Temple Finish**

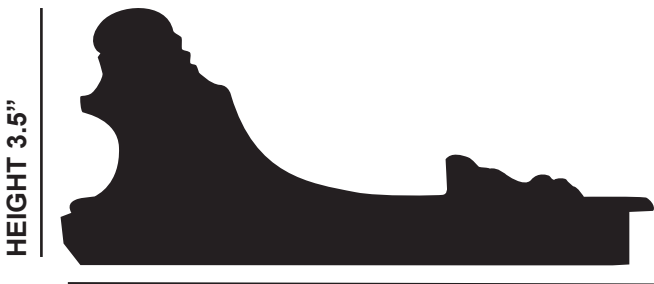




**MWF #905**  
**Santiago**  
**Full 22k Temple Finish**



**MWF #910**  
**Brighton**  
**Full 22k Temple Finish**



**WIDTH 6"**





**MWF #914**

**Bordeaux**

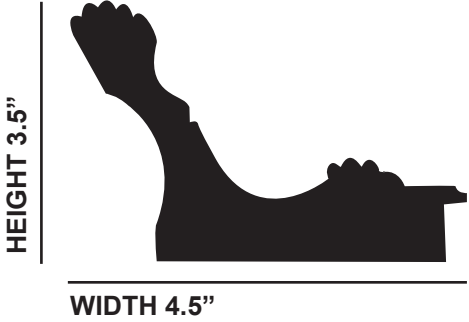
**Full 18k Temple Finish**



# MWF #950

Versailles

Full 22k Temple Finish



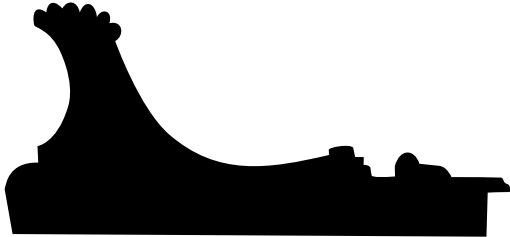


# MWF #951

Fluted Scoop - Lamb Tongue Liner

Full 22k Temple Finish

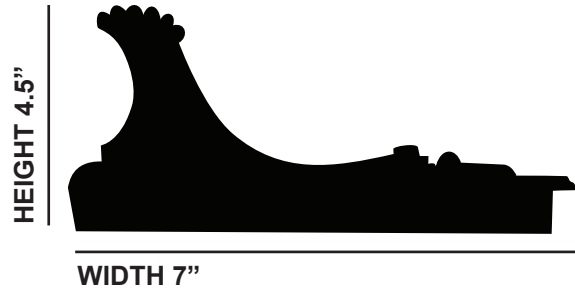
HEIGHT 4.5"



WIDTH 7"



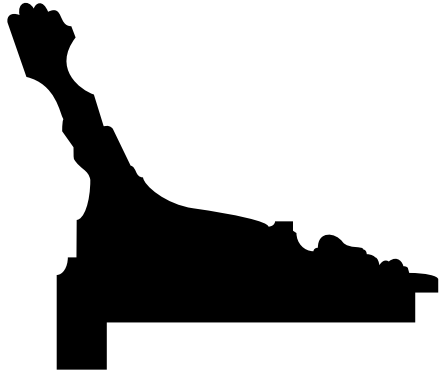
**MWF #952**  
**Fluted Scoop - Shield Liner**  
**Full 22k Temple Finish**





**MWF #970**  
**French Frame**  
**Full 22k Red and Black Clay**

HEIGHT 5.75"



WIDTH 5.75"



# Masterworks Temple Frames

Abidjan, Ivory Coast	Idaho Falls, Idaho	Panama City, Panama
Accra, Ghana MTC		Paris, France
Apia, Samoa	Jordan River, Utah	Payson, Utah
Atlanta, Georgia		Pocatello, Idaho
Arequipa, Peru	Kinshasa, Democratic Republic of the Congo	Preston, England
	Kona, Hawaii	Provo, Utah
Barranquilla, Colombia	Kyiv, Ukraine	
Belém, Brazil		Quetzaltenango, Guatemala
Bern, Switzerland	Laie, Hawaii	Quito, Ecuador
Bogotá, Colombia	Lima Peru, Los Olivos	
Boise, Idaho	Lisbon, Portugal	Raleigh, North Carolina
Boston, Massachusetts	Los Angeles, California	Recife, Brazil
Bountiful, Utah	Louisville, Kentucky	Redlands, California
Brasília, Brazil		Rexburg, Idaho
Brigham City, Utah	Manhattan, New York	Rio de Janeiro, Brazil
	Manila, Philippines	Rome, Italy
Calgary, Canada	Melbourne, Australia	
Campinas, Brazil	Memphis, Tennessee	Sacramento, California
Cardston, Alberta, Canada	Meridian, Idaho	San Diego, California
Cebu City, Philippines	Mesa, Arizona	San Juan, Puerto Rico
Cedar City, Utah	Mexico City, Mexico	St. Paul, Minnesota
Chicago, Illinois	Monterrey, Mexico	Stockholm, Sweden
Columbia River, Washington	Monticello, Utah	Sydney, Australia
Concepción, Chile		
Curitiba, Brazil	Nashville, Tennessee	Tampico, Mexico
	Nauvoo, Illinois	Tegucigalpa, Honduras
Durban, South Africa	Newport Beach, California	Tokyo, Japan
		Toronto, Ontario, Canada
Fortaleza, Brazil	Oakland, California	Tucson, Arizona
Frankfurt, Germany	Oaxaca, Mexico	
Fresno, California	Ogden, Utah	Urdaneta, Philippines
Fukuoka, Japan	Oklahoma City, Oklahoma	
	Oquirrh Mountain, Utah	Vernal, Utah
Hamilton, New Zealand	Orlando, Florida	
Helena, Montana	Orem, Utah	Washington D.C.
Helsinki, Finland		Winter Quarters, Nebraska
Hermosillo, Sonora, Mexico		
Hong Kong, China		Yigo, Guam